

Developing a Plan Towards Ending the HIV Epidemic (EtHE) in Alabama: A Work in Progress

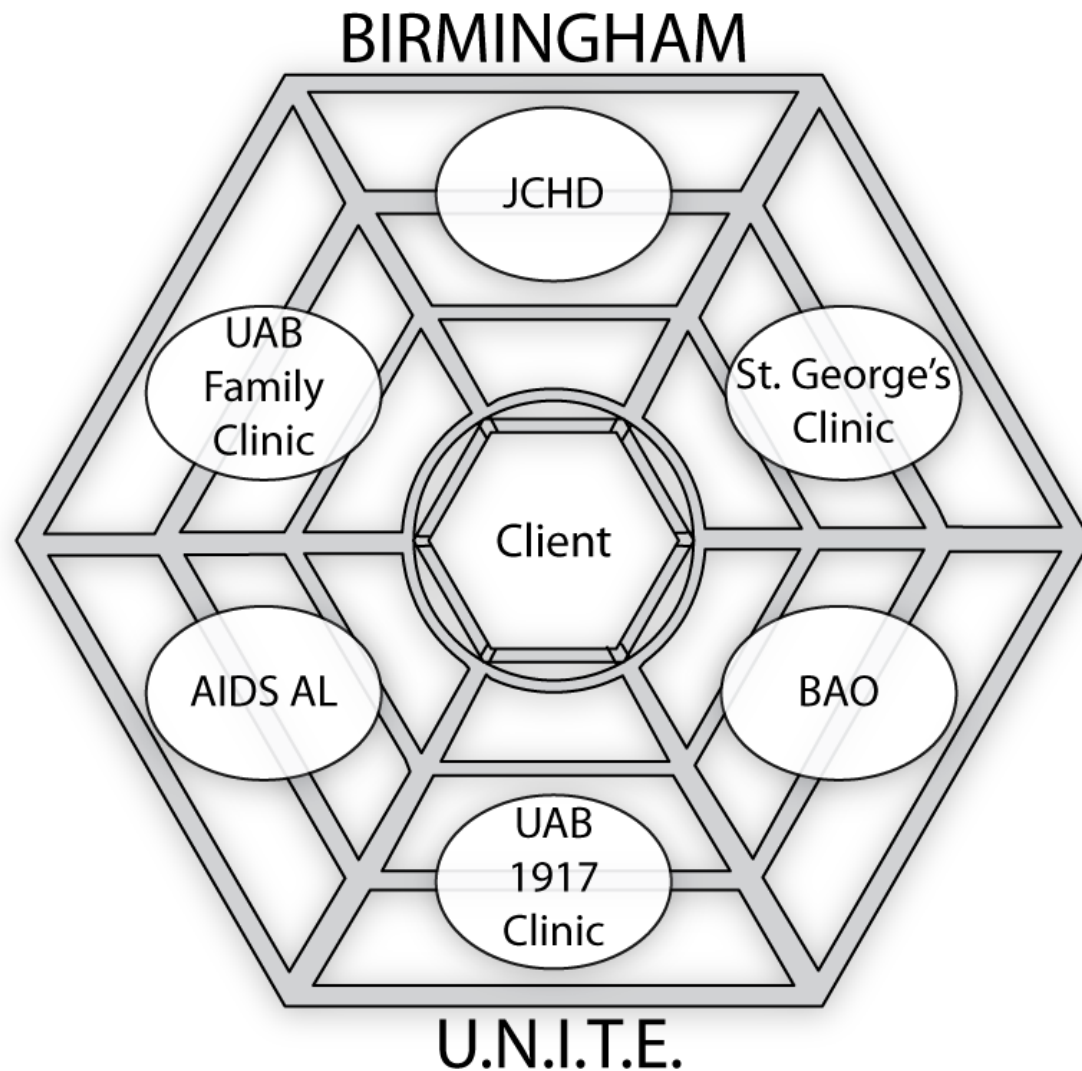
Michael J. Mugavero, MD, MHSc

Co-Director, UAB Center for AIDS Research (CFAR)

Member, Jefferson County HIV/AIDS Community Coalition

Member, Alabama Regional Quality Group

Birmingham U.N.I.T.E.; circa 2009



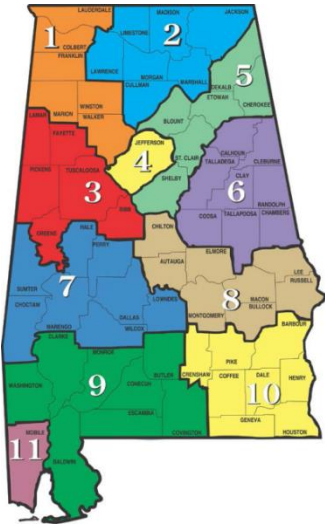
“Ending AIDS in Alabama”

Community Dialogue

January 31, 2013

Action Plan:

- Make U.N.I.T.E. a reality
- Construct AL “Cascade”





Goals:

Jefferson County HIV/AIDS Community Coalition, est. March 2013

1. Improve health outcomes;
2. Enhance prevention, treatment and research opportunities;
3. Improve social and economic justice;
4. Foster community collaboration to achieve parity, inclusion and representation; and
5. Identify, evaluate, and apply for alternative sources of funding to maximize long-term sustainability.

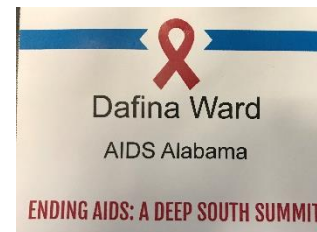
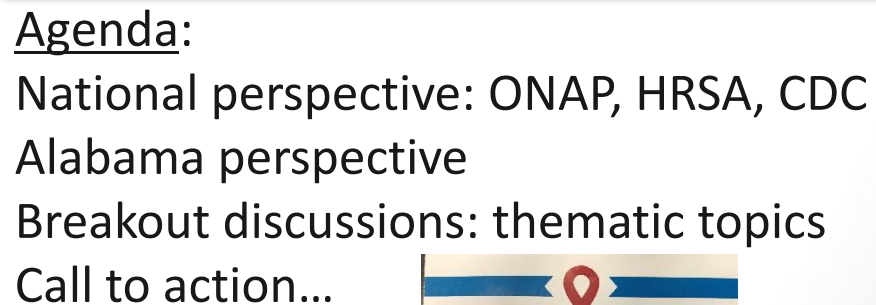


HIV front line providers meeting, BAO, Dec 2015 and Nov 2016





BHM Mayor William Bell
Douglas Brooks, ONAP Director
Laura Cheever, HRSA
Norma Harris, CDC
Consumers / Community
Public Health Leaders & Staff
- State (ADPH) and Local (JCDH)
ASO/CBO Leaders & Staff
HIV Clinical Leaders & Staff



Alabama U.N.I.T.E.; ASO/CBO

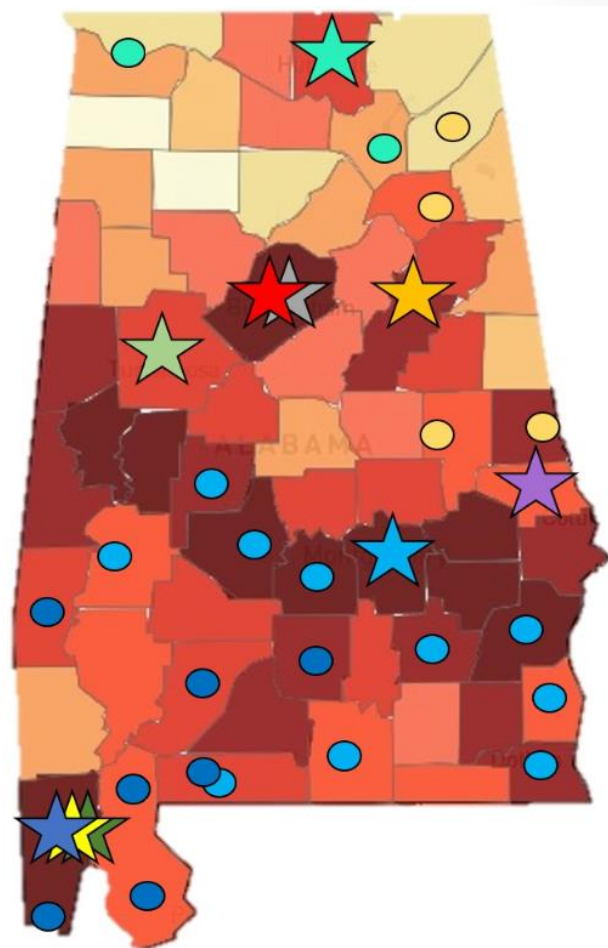
AIDS Service Network of Alabama

- AIDS Alabama
- AIDS Alabama South (Mobile)
- Birmingham AIDS Outreach
- Five Horizons (Tuscaloosa)
- Health Services Center (Anniston)
- Medical Advocacy and Outreach (Montgomery)
- Selma AIDS Information & Referral
- Thrive (Huntsville)
- Unity Wellness (Auburn)
- Commitment to talk and collaborate
- Regular meetings
- Attempt to not fall into turf wars

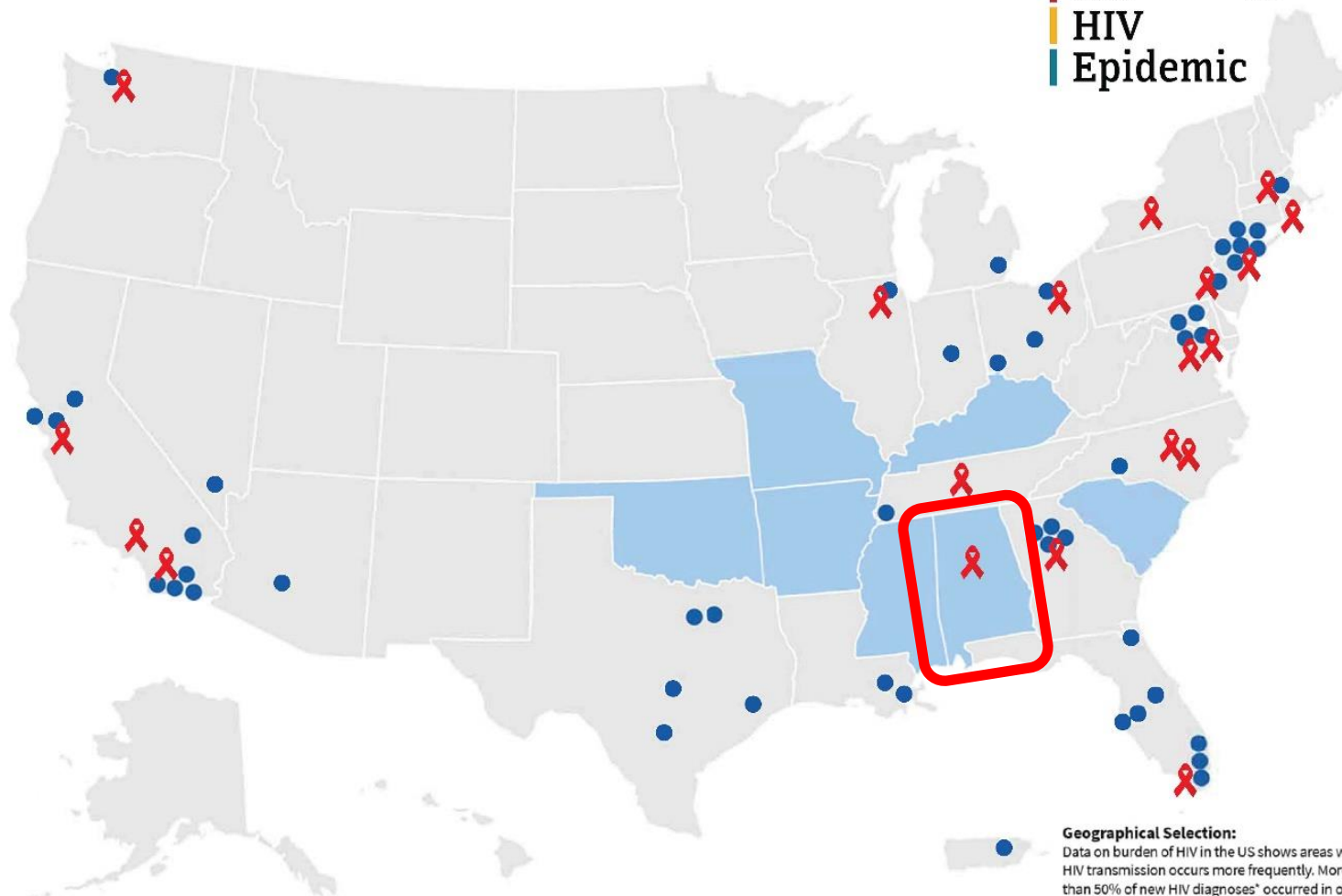


Alabama U.N.I.T.E.; Ryan White Clinics

“The Alabama Quality Management Group aims to continuously improve the quality of HIV care consistent with recognized national standards and current HIV research”



Ending the HIV Epidemic



= NIH-funded Centers for AIDS Research site

Geographical Selection:

Data on burden of HIV in the US shows areas where HIV transmission occurs more frequently. More than 50% of new HIV diagnoses* occurred in only 48 counties, Washington, D.C., and San Juan, Puerto Rico. In addition, 7 states have a substantial rural burden – with over 75 cases and 10% or more of their diagnoses in rural areas.

EtHE in Alabama Focus: Status Neutral Continuum of HIV Prevention & Care

